



AW Company

EMO-500

Two Component Ratio Monitor



Technical Specifications:

- Two signal component ratio monitor
- RS-232 or RS-485 serial communication
- Nine programmable units of measure
- Seven totalizers for reporting
- Display flow rate, total or ratio
- Net consumption display

What is an EMO-500 Monitor?

The EMO-500 is a two signal component ratio monitor designed for use in steady or pulsing flow streams. Signals from two flow meters can be displayed as independent flow rates or totals, or as an A/B, A + B or A - B relationship. In ratio mode, a programmable ideal ratio is compared to the actual ratio, and off ratio conditions are indicated via one of the four limit relays. These relays can be used to operate audible or visual alarms, or to terminate pump operation. The EMO-500 has seven different totalizers for reporting and record keeping. Other features include job resets, RS-232/485 Serial Communication and a 4-20 mA output.



AW Company

EMO-500

Two Component Ratio Monitor

Key Programming Features:

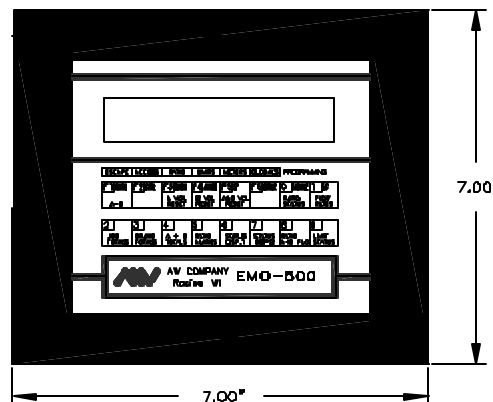
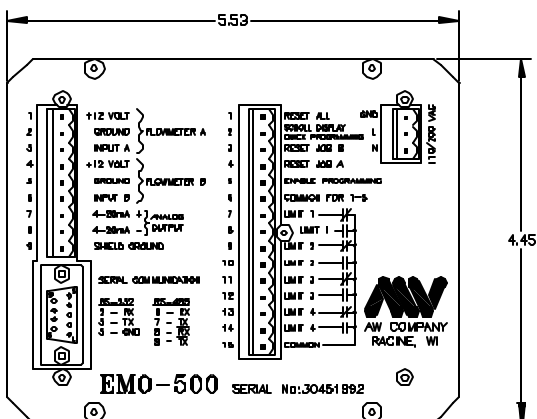
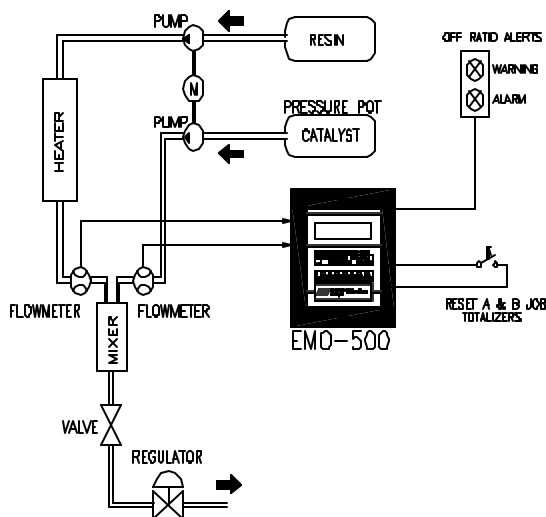
- Ideal Ratio: User defined, compared to actual ratio
- Gate Time: Time before the flow rate display updates
- Sample Size: Number of pulses counted before ratio updates
- Limits: Ratio, Flow Rate and Total
- Units of Measure: Liter, CC, Gal, Oz, gr, kg, Lb, RPM, Hz

Display Information:

Ratio: Ideal	Flow Rate A	Job Total A	Grand Total
Ratio: Actual	Flow Rate B	Job Total B	Grand Total B
Limit Settings	Flow Rate A+B	Job Total A+B	Grand Total A+B
Limit Status	Flow Rate A-B	Job Total A-B	

Technical Information:

- Power Supply** Input: 110 VAC or 220 VAC
Consumption: 4 Watts
- Communication:** Type: RS-232 & RS-485
Protocol Type Similar to OPTO 323
- Environmental:** Storage: -40° C to 85° C
Operating: 0° C to 50° C
Humidity: 10 to 90% Noncondensing
- Limits:** 10 Amp, 110 V dry contact relays



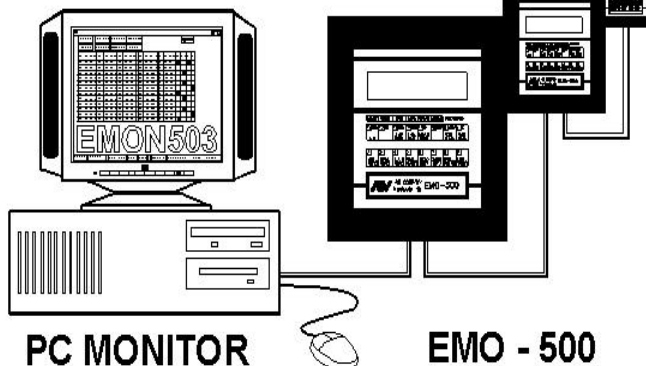
EMO-500/E Industrial Enclosure



- Dual Flow Meter Support
- Warning and Alarm Lights
- Alarm Siren and Silencer
- External Reset
- RS-232/485 Communications
- NEMA 12 Enclosure
- Industrial Push Button Control
- Pre-wired, ready to go

E-MON-503

PC Based Material Monitoring System



Products may be subject to change without notice - Contact factory for current information